

Pandemic (H1N1) 2009 - update 85 by WHO HQ

29 January 2010

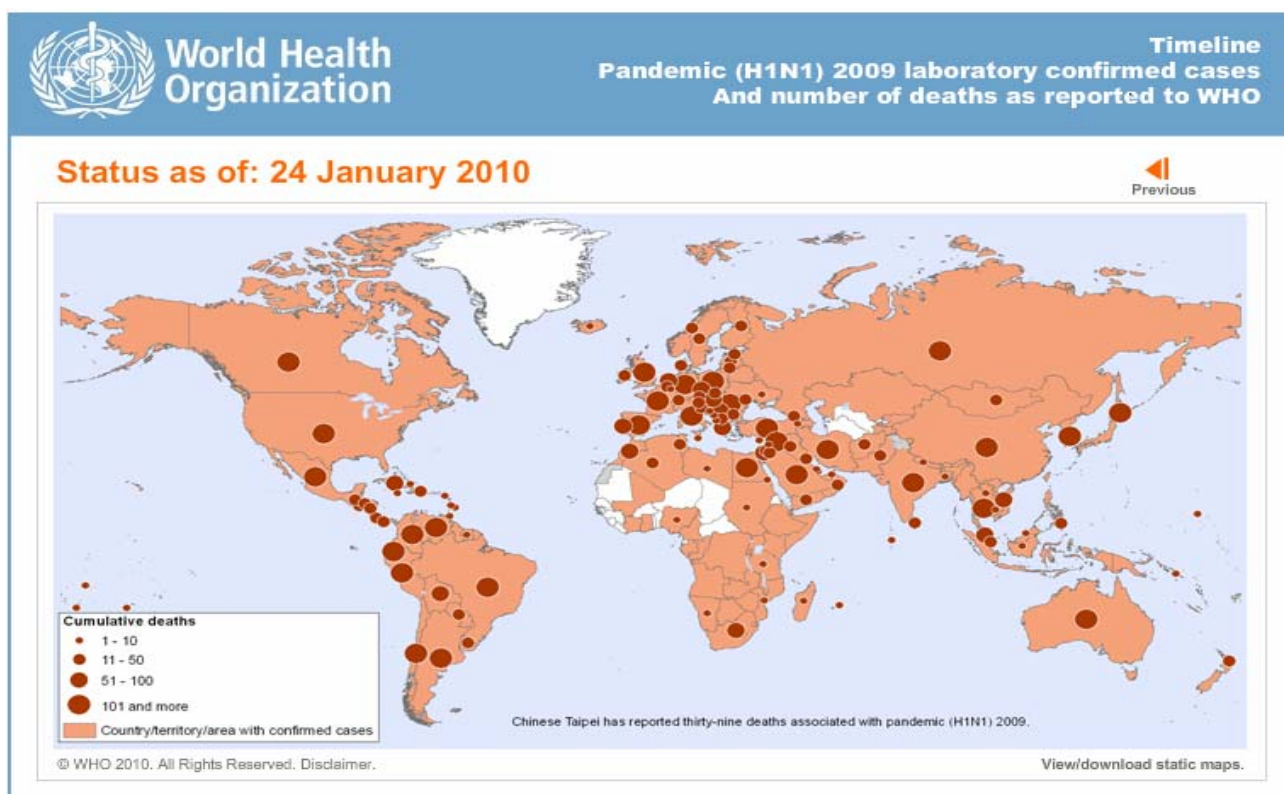
As of 24 January 2010, worldwide more than 209 countries and overseas territories or communities have reported laboratory confirmed cases of pandemic influenza H1N1 2009, including at least 14,711 deaths.

The countries and overseas territories/communities that have newly reported their first pandemic (H1N1) 2009 confirmed cases since the last web update (No. 84): none.

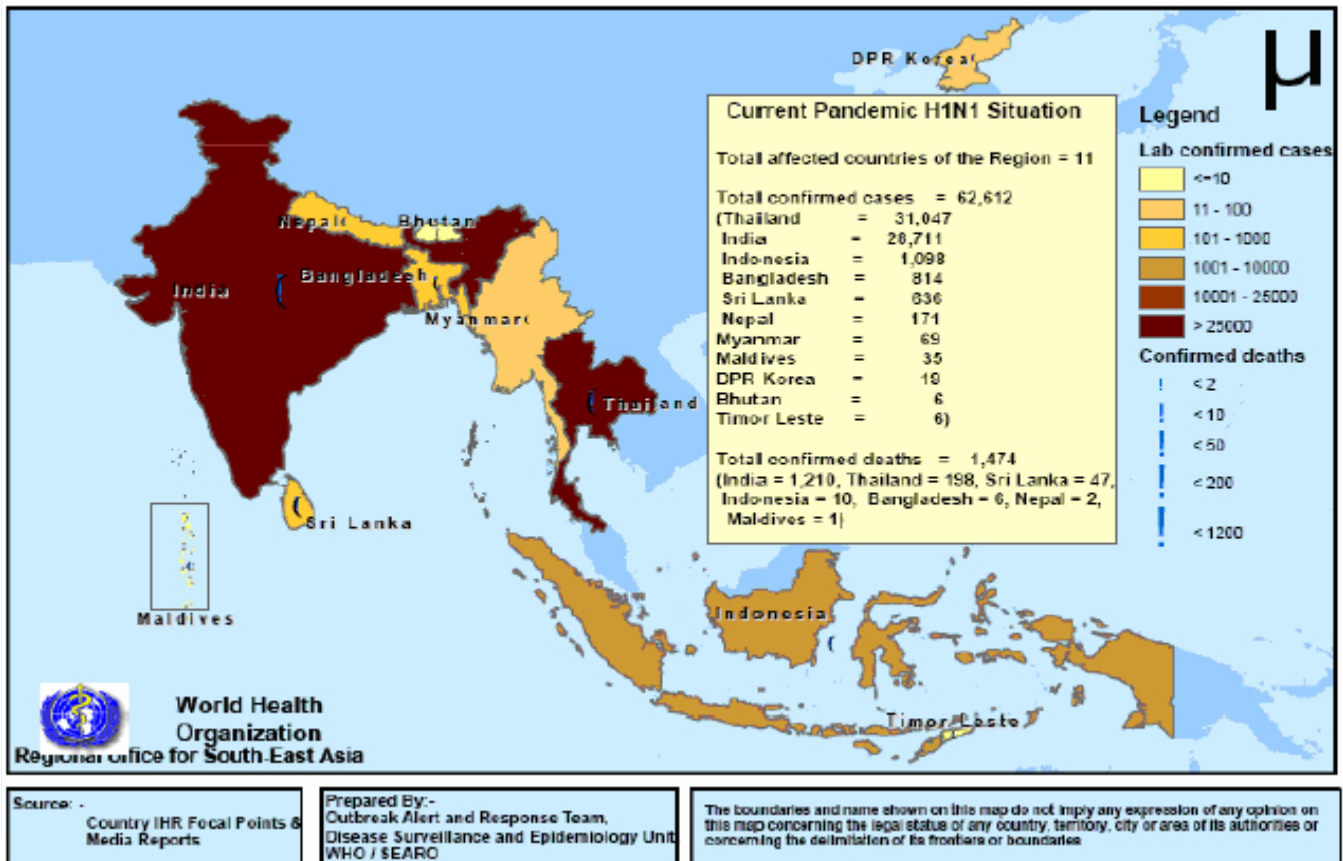
The countries and overseas territories/communities that have newly reported their first deaths among pandemic (H1N1) 2009 confirmed cases since the last web update (No. 84): Cyprus and Nigeria.

Region	Deaths
WHO Regional Office for Africa (AFRO)	133
WHO Regional Office for the Americas (AMRO)	At least 7,166
WHO Regional Office for the Eastern Mediterranean (EMRO)	1,002
WHO Regional Office for Europe (EURO)	At least 3,429
WHO Regional Office for South-East Asia (SEARO)	1,426
WHO Regional Office for the Western Pacific (WPRO)	1,555
* Grand Total	At least 14,711

The reported number of fatal cases is an under representation of the actual numbers as many deaths are never tested or recognized as influenza related



Pandemic (H1N1) 2009 in SEA Region, as of 29th January 2010



Pandemic H1N1 2009 - Bangladesh update

Situation:

- A single laboratory confirm case has been detected in last week.

Preparedness and Response:

- Till date, 815 Lab confirmed cases were reported of which 6 died.
- Action Plan on Pandemic H1N1 2009 vaccine storage, distribution and fixation of priority has been approved by the National Technical Committee of Pandemic Influenza.

Related Links

http://www.who.int/csr/disease/swineflu/notes/briefing_20091119/en/index.html
http://www.searo.who.int/EN/Section10/Section2562_14940.htm
http://www.searo.who.int/EN/Section10/Section2562_15046.htm
<http://www.whoban.org/>
<http://www.iedcr.org/>
<http://www.cdc.gov/h1n1flu/update.htm>
<http://www.fao.org/AG/AGInfo/programmes/en/empres/AH1N1/Background.html>
http://www.who.int/csr/disease/swineflu/notes/briefing_20091105/en/index.html
<http://www.who.int/feeds/entity/csr/disease/swineflu/en/rss.xml>

For further Information Please Contact:

WHO Programme Office at National Disease Surveillance Centre (NDSC),

IEDCR Building, DGHS, Mohakhali, Dhaka-1212, Bangladesh. Email: Biswasm@searo.who.int